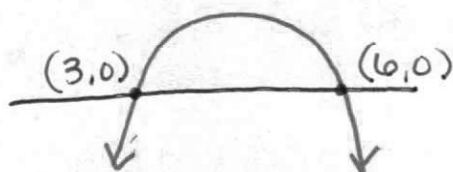
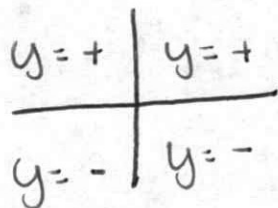
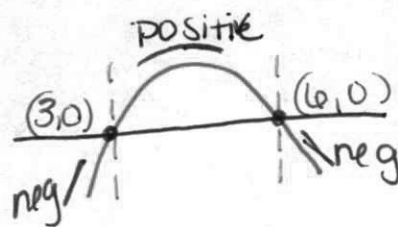
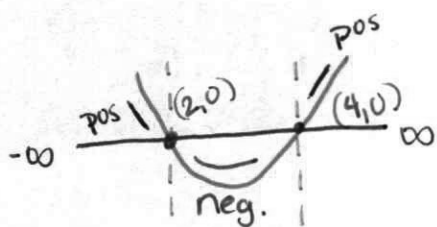
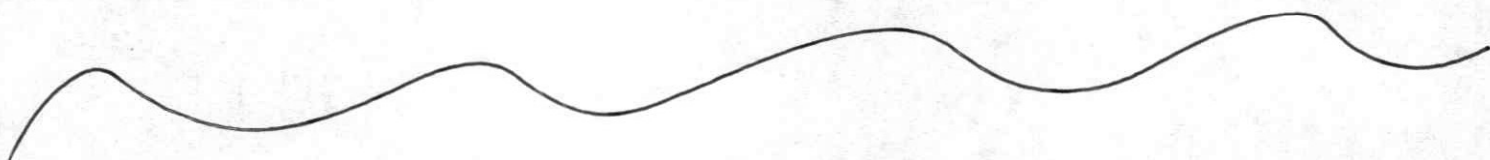


X-intercepts: Zeros ($y=0$)



X-int:
Point where graph
passes through the x-axis



Positive: $(-\infty, 2), (4, \infty)$

Negative: $(2, 4)$

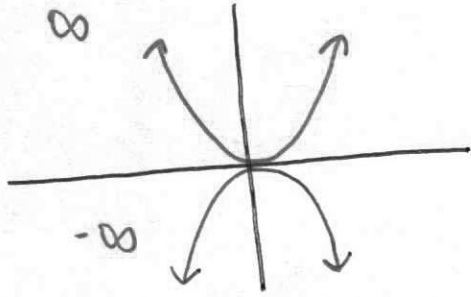
pos: $(3, 6)$

negative: $(-\infty, 3), (6, \infty)$

Positive: where the graph is positive; above the x-axis (*use x-values of x-int.)

Negative: where the graph is negative; below the x-axis (*use x-values of x-int)

End Behavior



$$\text{As } x \rightarrow \infty, y \rightarrow \underline{\infty}$$

$$\text{As } x \rightarrow -\infty, y \rightarrow \underline{\infty}$$

* What happens as I travel left or right

* Where are the arrows pointing

$$\text{As } x \rightarrow \infty, y \rightarrow \underline{-\infty}$$

$$\text{As } x \rightarrow -\infty, y \rightarrow \underline{-\infty}$$